

419 S. Franklin St.  
Janesville, WI 53548  
Return Service Requested



Please pass me to a friend  
or recycle!

NON-PROFIT  
ORGANIZATION  
U.S. POSTAGE PAID  
MONROE, WI  
PERMIT NO. 3

---

---

---

---



# The Naturalist

*Green-Rock Audubon Society*



*Protecting Wildlife for Tomorrow*

Serving Lafayette, Green,  
& Rock Counties

# Highlights from the President

## Keep On Keepin' On

It's hard not to be environmentally discouraged these days.

The Bears Ears National Monument in Utah is going to be slashed by 85%. It's the first National Monument to be created as a result of advocacy by Native Americans. Foxconn has been exempted from certain environmental regulations for their proposed plant in Racine County. The tax reform bill opens a part of the Arctic National Wildlife Refuge to oil drilling. Wisconsin has passed a bill to permit metallic mining without proof that it is safe for the environment.

My inbox is full of appeals from conservation groups that need more money to help protect life on our planet. I'd like to send money to them all.

What to do? I don't want to get into such a funk that I just give up and stop listening to the news. So I remember the quote from Edward Everett Hale:

*I am only one,  
But still I am one.  
I cannot do everything,  
But still I can do something;  
And because I cannot do everything,  
I will not refuse to do the something that I can do.*



*Neil with Don Gabower and Nancy Bennett, Foundation founders of GRAS, attending the Annual Meeting for 2017!*

Each of us can choose an issue (or two or three) to pay attention to and write to legislators and newspapers or share on Facebook. We can also find ways to personally make the world healthier. It can be adding native plants to your yard so the birds, bees and butterflies have a place to eat. It can be joining a group like Citizens Climate Lobby to advocate for renewable energy.

A group of us (8-10) gather each week to work on property that G-RAS owns. We fight garlic mustard spring and fall. We clear out fallen trees and brush to prepare for prairie seeding. We plant oak trees in Androne Woods. Each week, Victor (our land manager) has a project for us to do. We put the work day on our calendars and build it in to our lives.

Doing something constructive is a good antidote for discouragement. Let's all find ways to make a difference.

*Neil Deapree*

# Sunny Peace Prairie Becomes Part of G-RAS

By Neil Deupree



*Caleb Pourchot, Conservation Specialist for Groundswell Conservancy, completing a baseline inventory for the conservation easement being placed on the property. It was a foggy day at the Sunny Peace Prairie in Orfordville in November, 2017.*

*Photo by Norm Aulabaugh*

At the January 10, 2018 G-RAS board meeting, the Agreement to accept the property to be restored as The Sunny Peace Prairie was approved unanimously by the G-RAS Board of Directors.

The property consists of 75 acres on Coon Island Road near Orfordville. It includes two woodlots, scenic views from a central rise, and cropland. G-RAS has agreed to accept ownership of the property and to work closely with Norm & Carol Aulabaugh, the donors, in restoring it to native habitat.

The Board has been considering this proposal for several months. A committee has been meeting to evaluate the agreement and plan the work for the restoration of the property over the next three to five years including support infrastructure at the entrance to the property.

The committee consists of Victor Illichmann, Joni Denker, Neil Deupree, Nancy Zolidis, and



## Sunny Peace Prairie Becomes Part of G-RAS (cont'd)

...Norm & Carol Aulabaugh. Much of the restoration will be carried out by a contractor to be selected by the committee and approved by the Board. Norm Aulabaugh was designated as Project Manager at the January 10 board meeting.

I am grateful for the generosity of the Aulabaughs, and I'm looking forward to the transformation of this part of our neighborhood for the sake of wildlife and human peacefulness. One of the first activities will be to create a comprehensive inventory of the physical state of the land as well as an inventory of the plants, animals, and yes insects, birds and even the creepy crawling things. That way changes at the prairie can be tracked over time.

If you would like to participate in this activity, please let Norm Aulabaugh know (608 879-2841) or email him at [nacaula@gmail.com](mailto:nacaula@gmail.com).



*Neil with donors, Norm and Carol  
Aulabaugh, with the signed  
agreement*

# G-RASlands Winter 2018

*Prepared by Victor Illichmann*

## **Androne Woods**

The garlic mustard was notable for its absence this fall. We have Workenders scheduled for April 6, 18, 27, and May 1, 5, 12, 15, 18, and 29, and June 1. For next fall we have Oct., 19, 26, 30, and Nov. 2, 6, 9, 13, and 16. The torches will be ready, I don't expect the garlic mustard to give up easily. We have 1500 white oak and 100 serviceberry on order. The plan is to plant these trees on April 6<sup>th</sup>. We will need to be out there earlier to place tubes and stakes. April 6 is a day that will be critical to have as many volunteers as we can get to help.

## **Cleophas Reserve**

This winter we need to burn the fallen trees here so we can get in and kill the canary grass, eventually restoring it to prairie. We have a contract to restore 9 acres. It was supposed to be started in spring 2017, but it was too wet to get in and do a burn so we put it off a year. We placed the needed corduroy along our west boundary. We now have a chain to control motorized access to this property. We encourage everyone to come and enjoy, but we like to limit motorized access to maintenance vehicles only so you can enjoy this property in peace and quiet.

## **Gabower-Reilly Reserve**

We have enclosed our parking area to limit access to motorized vehicles on this property as well. Everyone is welcome, but for your enjoyment, we want to limit motorized vehicles to those needed for maintenance. Weather permitting, we will get a start burning fallen trees in February and March. We have some areas east of the creek where we will kill the canary grass so the prairie vegetation there can do better.

*Snowy Owl shot by Joni Denker*



# G-RASlands Winter 2018

## Spring Creek Reserve

We have burned a lot of fallen trees here, cleared a firebreak along the west side of the creek, and cleared the fence line in the far northwest corner. We have a few acres east of the creek where we will kill the canary grass. Depending on how that works, we can restore it either next fall or the year after.

## Jason Briggs Wetland

Mike and Wayne Tiffany and I worked with The Prairie Enthusiasts clearing brush on Dec. 2<sup>nd</sup>. With this property, Dave Dummer's and our property, we have a contiguous area stretching from Brosteun Rd. to Gravedale Rd. that is protected. In the future it would be nice to connect our trails and firebreaks so it will be possible to hike this whole distance.

## Eagles

On Dec. 1<sup>st</sup> when I was taking the tractor back to the shed, there were 3 eagles fighting over a dead possum. They were in the field north of Cleophas Rd. and east of Paque's property. One flew into a large tree by the road. It dropped the possum when I got under the tree. He missed.



©2014 Joni D.

*Sandhill Cranes shot by Joni Denker*

# Rock County Conservationists Events

## Partners in conservation...

### **Saturday, February 17, 10 am-noon: Winter Work Day and Potluck Luncheon at the Gabower-Reilly Reserve of the Green-Rock Audubon Society**

(In case of adverse weather, Saturday, February 24, 10 am-noon). Meet at the preserve parking lot on west Cleophas Road, just west of the intersection of west Cleophas Road and south Barnum Road.

Come help G-RAS in clearing invasive, nonnative brush and other plants to improve wildlife habitat and native plant communities. Volunteers should dress for the weather and plan to work for 2 hours. Be prepared to get dirty and bring whatever tools you might have that would be useful: chainsaws, bow saws and loppers. If weather permits, there may be a cookout of burgers or brats, but participants are also asked to bring a dish to pass and their own beverages and table service.

### **Saturday, March 3, 1-3 pm: RCC Annual Meeting and Program: Creating Habitat for Pollinators**

Meet at the community room of Basics Food Co-op at 1711 Lodge Drive in Janesville, WI.

The meeting begins with awards and recognition going to the nine different teachers from schools in Rock county who have created and maintained pollinator gardens on their school sites supported by grants from the Rock County Conservationists.

Next, there will be a program presented by Emily and Larry Scheunemann about how to create backyard habitats to benefit pollinators. This program will focus on the best plants for attracting pollinators and describe tips on ways to provide water and shelter for bees, butterflies, hummingbirds and other pollinators.

After a short break with refreshments being served, the annual business meeting of the RCC will conclude the afternoon's events. All RCC members are encouraged to attend so we will have the quorum needed to carry out official business.



# What's Going On

## Land Trust Standards examined

G-RAS is a member of the Land Trust Alliance, since we own property and are managing it for conservation purposes. The national group has issued twelve Standards and Practices (guidelines for land trusts). The G-RAS board is working through them two at a time to confirm that we intend to be in compliance. We have examined and affirmed the first six, including ethics, accountability and conflict of interest.

## Conservation opportunities

There's a new group on Facebook: Stateline Area Conservation Coalition.

Representatives from local conservation organizations can share their activities and the news will be distributed to everyone who likes the page. Meghan Trimm ([hummingroots@gmail.com](mailto:hummingroots@gmail.com)) has been recruiting for the effort. Check it out and tell her about other groups that might be included.

## Help us get the word out

We're always looking for articles for *The Naturalist*. If you have an idea or a topic, please send your piece to Meghan Trimm ([hummingroots@gmail.com](mailto:hummingroots@gmail.com)) by March 1. Our next issue will be Spring 2018, published April 1.

## What's the envelope for?

Local memberships in G-RAS can be received at any time, but January is a good month to send in your local renewal. If you are a member of the National Audubon Society, you are automatically enrolled in Green-Rock Audubon Society. If you wish to support our local chapter, we encourage you to do that by sending your donation in the enclosed envelope. (Seniors or students \$10, Singles \$15, Couples \$20)

If you are receiving *The Naturalist* via email, you may send a donation to John Patterson, N3262 Loop Road, Monroe, WI 53566. If you have joined the National Audubon Society and have not received the Audubon Magazine, please call Neil Deupree, 752-8342. Thanks for your support. We want to keep helping our members and friends in your conservation work.



# Native Landscaping

At the G-RAS annual meeting in October, Ivy Otto told about how she has re-created her back yard into a bird sanctuary. Many of us were impressed by the number of different bird species that have found and enjoyed her place. Here are a few resources for anyone who wants to follow her example.

Here is a link to Ivy Otto's presentation video by Norm Aulabaugh:

<https://youtu.be/UZeIYW4pkC4>

The follow-up story for the Gazette was written by Neil Johnson: <http://bit.ly/2DnPZZ4>

The preview story for the Gazette was written by Anna Marie Lux: <http://bit.ly/2D9UUK2>

The following are all available in the Arrowhead Library System:

## **Landscaping with native plants of Wisconsin**

Steiner, Lynn M., 1958-  
St. Paul, MN : MBI Pub. Co., 2007. 2007

## **Natural landscaping : designing with native plant communities**

Diekelmann, John.  
Madison, Wis. : University of Wisconsin Press, c2002. c2002

## **Landscaping with native trees : Northeast, Midwest & Southeast edition**

Wilson, James W. (James Wesley), 1925-  
Shelburne, Vt. : Chapters Pub., c1995. c1995

## **Bringing nature home : how you can sustain wildlife with native plants**

Tallamy, Douglas W.  
Portland : Timber Press, 2009. 2009

## **Bringing nature home : how native plants sustain wildlife in our gardens**

Tallamy, Douglas W. Portland, Or. : Timber Press, 2007. 2007

## **The wild lawn handbook : alternatives to the traditional front lawn**

Daniels, Stevie. New York, NY : Macmillan USA, 1995. 1995

## **Gardening with Prairie Plants**

Wasowski, Sally  
University of Minnesota Press, 2002

## **Gardening for the birds : how to create a bird-friendly backyard**

Adams, George Martin.  
Portland, Or. : Timber Press, 2013. 2013

## **The humane gardener : nurturing a backyard habitat for wildlife**

Lawson, Nancy, 1970- author.  
New York, New York : Princeton Architectural Press, [2017] 2017



## JOIN the Green-Rock Audubon Society (GRAS)

You have two ways to join:

\_\_\_\_\_ I wish to join only the Green-Rock Audubon Society. I understand that I will not receive the Audubon Magazine, but all dues will come back to GRAS: \$10 Senior or Student/ \$15 Single/ or \$20 Couple.

\_\_\_\_\_ I wish to join the National Audubon Society's normal membership at \$35 per year which includes the Audubon Magazine. We are offering a one year introductory membership of \_\_\_\_\_ \$20 for Senior Citizens and a one year \_\_\_\_\_ \$15 Student membership; both include the Audubon Magazine.

Make checks payable to GRAS

Mail to: John Patterson

N3262 Loop RD

Monroe, WI 53566

### Volunteer

I am volunteering for:

\_\_\_\_\_ Whatever is needed

\_\_\_\_\_ Burning

\_\_\_\_\_ Brushing

\_\_\_\_\_ Spraying

\_\_\_\_\_ Seed collecting

I can volunteer at:

\_\_\_\_\_ Wherever is needed

\_\_\_\_\_ Androne Reserve

\_\_\_\_\_ Spring Creek Reserve

\_\_\_\_\_ Gabower Reilly Reserve

\_\_\_\_\_ The Pond (Janesville)

\_\_\_\_\_ Waste management (between Beloit & Janesville)

### Donations

I would like to donate to:

\$ \_\_\_\_\_ Wherever needed

\$ \_\_\_\_\_ Green-Rock Citizens for Clean Water

\$ \_\_\_\_\_ Purchase herbicides

\$ \_\_\_\_\_ Purchase spray equipment

Maintain/Manage

\$ \_\_\_\_\_ Wherever is needed

\$ \_\_\_\_\_ Androne Reserves including Androne Woods

\$ \_\_\_\_\_ Spring Creek Reserve

\$ \_\_\_\_\_ Gabower Reilly Reserve

\$ \_\_\_\_\_ Forest Prairie Park (Monroe)

Name: \_\_\_\_\_

Donors: Please make check out to GRAS and mail to John Patterson at the above address.

I can volunteer on:

\_\_\_\_\_ Monday

\_\_\_\_\_ Friday

\_\_\_\_\_ Tuesday

\_\_\_\_\_ Saturday

\_\_\_\_\_ Wednesday

\_\_\_\_\_ Sunday

\_\_\_\_\_ Thursday

Volunteers mail form to:

Victor Illichmann

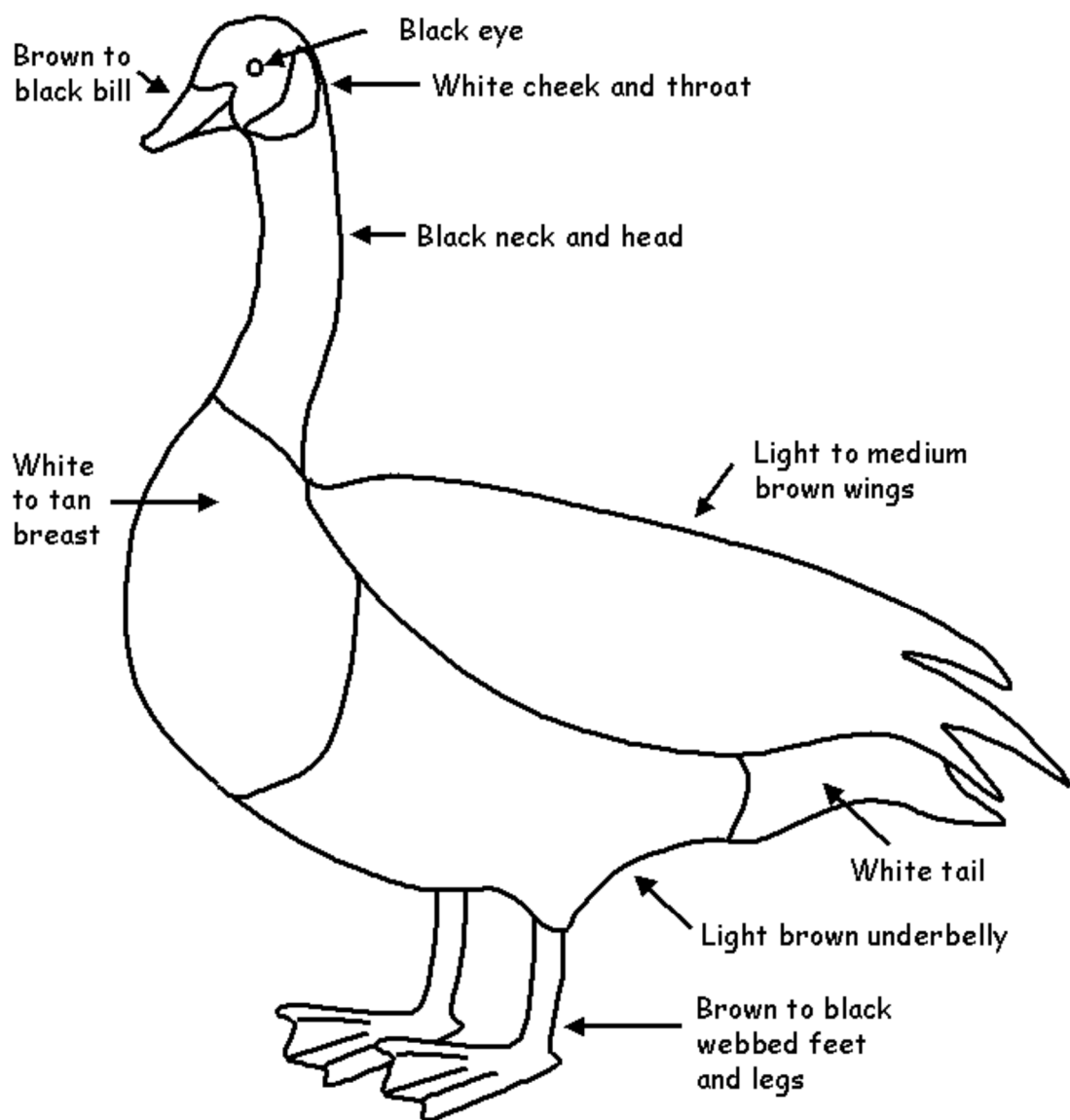
15515 W Elmer Rd

Evansville, WI 53536

Address: \_\_\_\_\_

Email: \_\_\_\_\_

## Kids Page



# Canada Goose

- 20 to 50 inches (55 to 122 cm) long.
- eat aquatic vegetation and grass.
- eggs are white. They lay 5 to 7 eggs at a time.
- common throughout North America.



## Friendly Reminder:

Annual Memberships for Local Green-Rock Audubon Society are Due in January. Thanks!

**Green-Rock Audubon Society (GRAS) membership for one year with the quarterly newsletter *Green Rock Naturalist* from Green Rock Audubon Society (all dues go to GRAS).**

- Senior or student membership \$10
- Single person membership \$15
- Couples membership \$20

See me in color  
**ONLINE!**



@GRAudubon, #GreenRockAudubon

[www.facebook.com/greenrockaudubon](http://www.facebook.com/greenrockaudubon)

[www.greenrockaudubon.org](http://www.greenrockaudubon.org)

Choose us on Amazon Smile!

### Board of Directors

To contact the directors email [gras@greenrockaudubon.org](mailto:gras@greenrockaudubon.org)

President, Neil Deupree: 608-752-8342

Vice President, Rich McLaughlin

Secretary, Dennis Rogers

Treasurer, John Patterson

Director, Donna Oxenreider

Director, John Watrous

Director, Joni Denker

Director, John Meland

Director, Open

Membership Chair, Steve Reischel

Land Mgmt. Chair, Victor Illichmann

Education Chair, Nadine Whiteman

## Volunteer!

Board Meetings are open to the public. They occur every first Wednesday of the month at 7PM at the Public Library at Brodhead.

### Working Through The Winter

The G-RAS work crew (AKA Victor's exercise club) continues to work every Friday morning from 9am til noon, weather permitting. We usually have at least 5 or 6 people. Our current task is stacking the downed wood in the Cleophas Reserve so that it can be burned and eliminated in preparation for eventual prairie seeding. If you're interested, please call Neil Deupree at 608-752-8342 to get on the email notification list.

